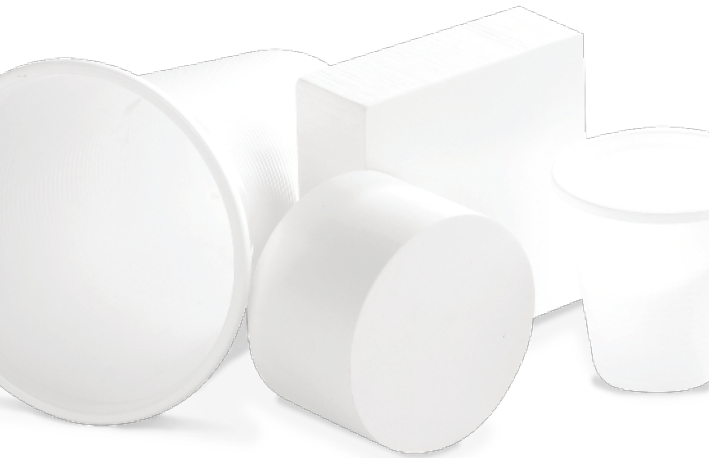


Epoxy Syntactic Foam



HYTAC-W is a syntactic foam formulated with an epoxy resin for short run or price sensitive applications. The material provides cost-effective, low thermal conductivity plugs for quick start-up times, great material distribution and improved surface appearance.

Thermoforming applications

- PS
- PE

Benefits

- Low heat transfer providing reduced warm-up times
- Improved material distribution compared to basic alternatives
- Low thermal expansion for better process stability

Machining and Polishing Guides

HYTAC materials are generally easy to machine and polish. Following the CMT guidelines will improve surface quality and consistency in plug performance.

THERMOSET

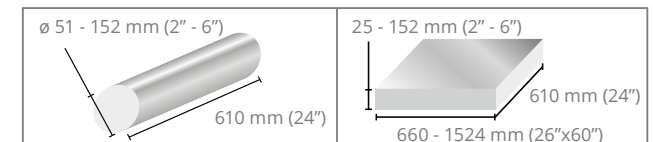
Material	W
Color	White
Density (ρ)	41-45 lb/ft ³ [657 - 721 kg/m ³]
Thermal Conductivity (k)	0.07 BTU/hr-ft-°F [0.11 W/m ² K]
Coefficient of Thermal Expansion(CTE)	22 x 10 ⁻⁶ /in/in°F [39 x 10 ⁻⁶ m/m/°C]
Compressive Strength	6,200psi [42.7 Mpa]
Service Temperature	350°F [176 °C]
Flexural Toughness (ASTM D790)	2.7psi [18.6 kPa]

Custom Cut Service



Get your material custom cut!
Contact CMT Materials for information and prices.

Standard Dimensions (larger rod diameters available on request)



W / WF / WFT / FLX / FLXT / C1R: standard tolerances are +0%, -1.5% of thickness or diameter. B1X / XTL: standard tolerances are +0.187" (5mm), - 0.0" (0mm) of thickness or diameter.